



Cape May County Technical School District

Course Guide

***Career, Vocational & Technical Courses
Evening Personal Enrichment Classes***



Adult & Community Education Fall 2025

188 Crest Haven Rd. Cape May Court House, NJ 08210 • 609.380.0241
www.capemaytech.com

Table of Contents

Youth Certification & Technical Courses

Certification Programs	Day	Page
American Red Cross Babysitter's Training	M, T	5
Technical Skills	Day	Page
Auto Fundamentals	W	5

Career, Vocational, & Technical Courses

Certification Programs	Day	Page
Adult & Pediatric First Aid/CPR/AED Initial Certification	W	6
BLS For the Health Care Professional Initial Certification	Th	6
Forklift Certification	M, W, Th	6
Serv Safe Manager Certification Course	M, F	6
Technical Skills	Day	Page
Auto Repair Lab - Beginners to Intermediate	T	7
Electrical House Wiring	M	7
Outboard Motor Maintenance and Repair	T	7

Community Education Classes

Art	Day	Page
Self-Portraiture in Oil - Beginners	M	7
Sketching and Drawing - An Introduction for Beginners	Th	7
Dance/Music	Day	Page
Guitar - Beginners	M	8
Guitar - Intermediate	W	8
Line Dancing - Beginners	M, W	8
Line Dancing - Advanced Beginners	M, W	8
Tap Dancing - Beginners	T	8
Tap Dancing - Advanced Beginners	Th	8
Quilting/Sewing	Day	Page
Knitting - Sweater/Project Help	M	9
Knitting - Fair Isle Knitting	T	9
Knitting - On the Bias	Th	9
Quilting By Machine	M	9
Sewing - Beginners	T	9
Sewing - Advanced Beginners	W	9

Culinary Arts

	Day	Page
Culinary Skills - Beginners	M	10
Peach Pie Scones with Strawberry Ice Cream	T	10
Strawberry Cream Cake	T	10
Pumpkin Pecan Pie and Cranberry Walnut Torte	T	10
Petite Flavored Cheesecakes with Homemade Crust	T	10

Health/Mindfulness

	Day	Page
Fit Fusion	T	11
Functional Fitness of Adults	W	11
Gentle Chair Yoga	T	11
Holistic Wellness - Introduction	Th	11
Meditation and Complementary Practices	Th	12
Slow Flow Yoga with Meditation	M	12
Soothing Effects of a Sound Practice for Relaxation	M	12
Weight Training - Open Format	M	12

Special Interest

	Day	Page
American Mahjong - Beginners	W	12
Digital Photography - Beginners	W	12
Interior Design of Your Home - Introduction	T	13
Learning About All Learners	Th	13
Selling on eBay	W	13
Russian Made Easy	T	13
Spanish - Introduction to Conversational	M	13
Traveling in Retirement	W	13

Dog Obedience

	Day	Page
Dog Obedience	Th	14
Dog Rally - Beginners	T	14
American Kennel Club Canine Good Citizen Program	T, Th	14

General Fall 2025 Information

	Page
Calendar for Community Education Courses	4
List of Classes by Days Offered	4
Testing Center	15
Cape May County Technical High School Information	16
Post Secondary Programs	17-19
Apprenticeship Programs	20
History of Cape Tech, Program/County Information	21-22
Registration Procedures for Community Education Courses	23

Need Career Training?

Learn More About Our Post-Secondary Programs and Apprenticeships on Pages 17-20.

List of Classes by Days Offered

Monday	Page	Wednesday	Page
Youth - American Red Cross Babysitter	5	Youth - Auto Fundamentals	5
Forklift Certification	6	Forklift Certification	6
Serv Safe Manager Cert. Course	6	Adult & Ped First Aid Initial Cert.	6
Electrical House Wiring	7	Guitar - Intermediate	8
Self-Portraiture in Oil - Beginners	7	Line Dancing - Beginners	8
Guitar - Beginners	8	Line Dancing - Advanced Beginners	8
Line Dancing - Beginners	8	Sewing - Advanced Beginners	9
Line Dancing - Advanced Beginners	8	Functional Fitness of Adults	11
Knitting - Sweater/Project Help	9	American Mahjong - Beginners	12
Quilting By Machine	9	Digital Photography - Beginners	12
Culinary Skills - Beginners	10	Selling on eBay	13
Slow Flow Yoga with Meditation	12	Traveling in Retirement	13
Soothing Effects of a Sound Practice	12		
Weight Training - Open Format	12		
Spanish - Introduction to Conversational	13		

Tuesday	Page	Thursday	Page
Youth - American Red Cross Babysitter	5	BLS For the Health Care Pro Init. Cert.	6
Auto Repair Lab	7	Forklift Certification	6
Outboard Motor Maintenance and Repair	7	Sketching and Drawing - Intro for Beginners	7
Tap Dancing - Beginners	8	Tap Dancing - Advanced Beginners	8
Knitting - Fair Isle Knitting	9	Knitting - On the Bias	9
Sewing - Beginners	9	Holistic Wellness - Intro	11
Peach Pie Scones with Strawberry Ice Cream	10	Meditation and Complementary Practices	11
Strawberry Cream Cake	10	Learning About All Learners	13
Pumpkin Pecan Pie/Cranberry Walnut Torte	10	Dog Obedience	14
Flavored Cheesecake with Homemade Crust	10	American Kennel Club Good Citizen Program	14
Fit Fusion	11		
Gentle Chair Yoga	11		
Interior Design of your Home - Intro	13		
Russian Made Easy	13		
Dog Rally - Beginners	14		

Friday	Page
Serv Safe Manager Cert. Course	6

Semester Calendar

Community Education not in session on
Sept. 23, Oct. 13, Oct. 15, Nov. 6, Nov. 27

September

M	T	W	TH
1	2	3	4
8	9	10	11
15	16	17	18
22	X	24	25
29	30		

October

M	T	W	TH
		1	2
6	7	8	9
X	14	X	16
20	21	22	23
27	28	29	30

November

M	T	W	TH
3	4	5	X
10	11	12	13
17	18	19	20
24	25	26	X



DID YOU KNOW?

The Cape May County Technical School District serves all ages & stages!

Post Secondary Certification Pg. 17-19

For adults age 18 and older with a high school diploma seeking career technical credentials.

Testing Center Pg. 15

In-person GED, CASAS, TEAS tests.

Apprenticeship Programs Pg. 20

Career Technical High School Pg. 16

A full-time, career-focused public school of choice.

Certification Classes Pg. 6

Technical Skills Classes Pg. 7

Community Education Classes Pg. 7-14

Do you have exceptional knowledge of a subject to share with others?

Cape May Tech is looking for individuals to join our team of outstanding instructors in the evening community education program. Call the office at 609-380-0241 for more information.

Youth Certifications (under 18 years old)

FB2501 BABYSITTING (13-17 years old)

This American Red Cross course Babysitter's Training program provides youth who are planning to babysit with the knowledge and skills necessary to safely and responsibly give care for children and infants, including Pediatric First Aid & CPR.

Certifications are valid for 2 years.

Students must attend all four sessions for certification.

Dates: Mondays - October 20, October 27, November 3, and Tuesday, November 11 (4 sessions)

Instructor: Daniel Loesch

Time: 4:00pm-6:00pm

Fee: \$80.00 + \$40.00 (certification fee)

Youth Technical Skills (under 18 years old)

FMA2501 AUTO FUNDAMENTALS (15-18 years old) (Session 1)

Join our Auto Fundamentals Class, designed for eager teens who would like to learn about the auto industry. Learn the basic fundamentals taught by an ASE (Automotive Service Excellence) certified technician in a modern, well-equipped shop setting. Gain hands-on experience and discover the world of automotive repair.

On the first night of class, a review of auto shop equipment and safety guidelines will occur.

Dates: Wednesdays - September 17 through October 8 (4 sessions)

Instructor: Dan Corcoran

Time: 5:30pm-8:30pm

Fee: \$84.00++(S)

FMA2502 AUTO FUNDAMENTALS (15-18 years old) (Session 2)

Course description is the same as Session 1, only the dates are different.

Dates: Wednesdays - October 22 through November 12 (4 sessions)

Instructor: Dan Corcoran

Time: 5:30pm-8:30pm

Fee: \$84.00++(S)

Certifications

FC2501 ADULT & PEDIATRIC FIRST AID/ CPR/AED INITIAL CERTIFICATION

This American Red Cross course trains individuals to act in emergency situations and to recognize and care for life threatening adult and pediatric emergencies such as respiratory or cardiac problems and sudden illness. First Aid is included. Students will have the opportunity to practice on the training manikin and the test for certification will be administered the same night. Certifications are valid for 2 years.

Dates: Wednesdays - September 17 or October 22
(1 session needed for certification)
Instructor: Daniel Loesch
Time: 4:00pm - 7:00pm
Fee: \$40.00 + \$40.00(certification fee)

FC2502 BLS FOR THE HEALTH CARE PROFESSIONAL INITIAL CERTIFICATION

The American Red Cross Basic Life Support (BLS) course is designed to train healthcare professionals including nurses, physicians, EMS professionals, and other healthcare and public safety personnel to respond to breathing and cardiac emergencies in adults, children and infants. Students will have the opportunity to practice on the training manikin and the test for certification will be administered the same night. Certifications are valid for 2 years.

Date: Thursday, October 9
(1 session needed for certification)
Instructor: Daniel Loesch
Time: 4:00pm - 7:00pm
Fee: \$40.00 + \$27.00 (certification fee)

FFL2501 FORKLIFT CERTIFICATION (Session 1)

Students will learn fundamental knowledge of lift trucks and their operation, including the importance of OSHA regulations as they relate to safe lift operation and number of accidents involving lift trucks. They will also be instructed on the principles of balance, stability, and capacity. They will learn the importance of preoperational inspection of a lift truck, safety guidelines for operating a lift truck, safe load techniques, as well as safe handling of fuels and batteries used in lift trucks.

Dates: Monday, September 22 and Wednesday, September 24
(Both days must be attended for certification)
Instructor: Adam Dunning
Time: 4:00 - 7:00pm
Fee: \$100.00

FFL2502 FORKLIFT CERTIFICATION (Session 2)

Course description is the same as Session 1, only the dates are different.

Dates: Wednesday, October 1 and Thursday, October 2
(Both days must be attended for certification)
Instructor: Adam Dunning
Time: 4:00 - 7:00pm
Fee: \$100.00

FSS2501 SERV SAFE MANAGER CERTIFICATION COURSE

This two-day, in-person certification course is designed for managers, supervisors, and food service personnel who are responsible for ensuring safe food handling practices. Participants will learn how to prevent foodborne illness, maintain compliance with health regulations, and create a culture of food safety in their workplace. The course culminates with the official ServSafe Manager Exam on the final day. Participants who earn a passing score will receive the nationally recognized ServSafe Manager Certification.

Dates and Times: Friday, November 21, 8:00am -2:30pm and
Monday, November 24, 8:00am - 12:30pm
(Both days must be attended for certification)
Instructor: Stephen Serano
Fee: \$125.00 + \$75.00 (supply fee)





Technical Skills

FT2501 AUTO REPAIR LAB - BEGINNERS TO INTERMEDIATE (Session 1)

Would you like to save money on gas and basic car maintenance? Learn the basic fundamentals taught by an ASE (Automotive Service Excellence) certified technician to service and maintain your vehicles to keep them running well. Hands on practice changing tires, oil, wiper blades, replacing bulbs, reset light procedures, and checking fluids. Also, discover what to look for when buying a used car. On the first night of class, a review of auto shop equipment and safety guidelines will occur. All automotive parts are supplied by the student and vehicles must be removed from the premises after each night of class, no exceptions.

Dates: Tuesdays - September 30, October 7, October 14
(3 sessions)
Instructor: Dan Corcoran
Time: 5:30pm - 8:30pm
Fee: \$63.00++(S)

FT2502 AUTO REPAIR LAB - BEGINNERS TO INTERMEDIATE (Session 2)

Course description is the same as Session 1, only the dates are different.

Dates: Tuesdays - October 21, October 28, November 4
(3 sessions)
Instructor: Dan Corcoran
Time: 5:30pm - 8:30pm
Fee: \$63.00++(S)

FT2503 ELECTRICAL HOUSE WIRING

Students will be introduced to the theory of electrical house wiring by applying the technical knowledge presented in the classroom and opportunity for hands-on experience. Electrical theory codes, standards, outlet connections, circuits and metallic and non-metallic cables will be included. This course covers the basics of electrical house wiring for the homeowner.

Dates: Mondays - September 15 through November 10
(8 sessions, no class on October 13)
Instructor: Mike Mills
Time: 5:30pm - 8:30pm
Fee: \$168.00 (S)

FT2504 OUTBOARD MOTOR MAINTENANCE AND REPAIR

This course is for the boater who wants to know more about their engine. Theory and practical hands-on instruction in the operation, maintenance and troubleshooting of two and four-stroke outboard motors and drive trains will be featured. Students will be invited to bring in their own outboard motor later in the semester for servicing or repair. All parts are purchased independently by the student.

Dates: Tuesdays - September 16 through November 11
(8 sessions, no class on September 23)
Instructor: Steve Schall
Time: 5:30pm - 8:30pm
Fee: \$168.00++(S)

Art

FA2501 SELF-PORTRAITURE IN OIL - BEGINNERS

This course offers an introduction to oil painting through the intimate and powerful lens of self-portraiture. Designed for beginners, it blends classical technique with personal exploration, encouraging students to build both technical skills and confidence in self-representation. Students will learn foundational oil painting methods with an emphasis on color theory, pigment handling, and understanding form through direct observation of the self. Each week will introduce a new concept or technique, guiding students from initial sketches to a completed self-portrait by the end of the course.

Dates: Mondays - September 15 through November 10
(8 sessions, no class October 13)
Instructor: Carly Miner
Time: 5:30pm - 8:30pm
Fee: \$168.00

FA2502 SKETCHING AND DRAWING - AN INTRODUCTION FOR BEGINNERS

This course offers an introduction to sketching and drawing for beginners. It will explore elements of design, such as line, shape, form, value, space and texture. The beginner artist will practice creating the illusion of depth and space, along with understanding light and shadow to create volume and depth. Each week will be experimenting with different drawing styles.

Dates: Thursdays - September 25 through November 20
(8 sessions, no class November 6)
Instructor: David Macomber
Time: 6:00pm - 8:00pm
Fee: \$112.00

Dance/Music

FG2501 GUITAR – BEGINNERS

Learn fundamentals of playing the guitar including notes on the finger-board, open chords and playing songs. Music theory, various music styles, and guitar techniques will be presented in a group instruction format designed for the novice learner. Bring your acoustic guitar and tuner to each night of class. Recommended textbook, purchased independently by the student: Hal Leonard Guitar Method Book I, ISBN 978-0793533923.

Dates: Mondays - September 15 through November 10
(8 sessions, no class October 13)
Instructor: Joe Scheid
Time: 6:30pm - 8:00pm
Fee: \$84.00++

FG2502 GUITAR – INTERMEDIATE

Continue the study of the guitar by developing different playing styles, learning music theory and additional fingering/strumming techniques. Students will interpret what a piece of music is telling them, such as beat, tempo, scale. Students will also learn movable barre chords and chord structure while exploring the elements of rhythm, melody, harmony and form the expressive controls of texture, timbre, dynamics, tempo and articulation. This class is conducted in a group instruction format. Please bring an acoustic guitar and tuner to each class along with a notebook and pen.

Dates: Wednesdays - September 17 through November 12
(8 sessions, no class October 15)
Instructor: Joe Scheid
Time: 6:30pm - 8:00pm
Fee: \$84.00++

FLD2501 LINE DANCING – BEGINNERS

Line dancing is a fantastic way to add activity and fun to your routine—and it's great for brain health, too. This beginner line dance class is perfect for all fitness levels—no experience needed. The instructor will break down easy-to-follow steps so you can build confidence, improve coordination, and dance in a relaxed, welcoming atmosphere to a variety of music. Come solo or get a friend to sign up—just wear comfy shoes and get ready to move!

Dates: Mondays and Wednesdays - September 15 through October 8
(8 sessions)
Instructor: Cathy Cashmere
Time: 5:30pm - 6:30pm
Fee: \$56.00



FLD2502 LINE DANCING – ADVANCED BEGINNERS

Take line dancing to the next level! This class is perfect for dancers who know the basic steps and are ready for a bit more of a challenge. The instructor will introduce slightly faster tempos, more complex step patterns, and fun routines to a variety of music. It's a great way to boost skills, stay active, and enjoy a supportive, upbeat group atmosphere. Lace up your dancing shoes and let's level up together! Bring friends to double the fun. Remember: Comfortable shoes are essential.

Dates: Mondays and Wednesdays - September 15 through October 8
(8 sessions)
Instructor: Cathy Cashmere
Time: 6:45pm - 7:45pm
Fee: \$56.00

FTD2501 TAP DANCING – BEGINNERS

Have you always wanted to learn how to tap dance? The exact origin of tap dancing is unknown, but most likely it developed from a combination of cultural dance influences. Through the years, tap dancing has gained prominence as both entertainment and an art form. In this course, you will learn basic tap technique, combinations and a routine. Swing your arms, tap your feet and dance to the music! No experience is necessary and tap shoes are optional. The instructor has over 25 years of experience teaching tap dancing to all ages.

Dates: Tuesdays - September 16 through November 11
(8 sessions, no class September 23)
Instructor: Mary-Anne Dieckhaus
Time: 6:30pm - 7:30pm
Fee: \$56.00

FTD2502 TAP DANCING – INTERMEDIATE

Do you have previous tap dancing experience? Have you completed two or more sessions of beginner tap? This course will focus on intermediate to advanced dances, as well as presentation of new dances to popular varieties of music. Join the fun!

Dates: Thursdays - September 18 through November 13
(8 sessions, no class November 6)
Instructor: Mary-Anne Dieckhaus
Time: 6:30pm - 7:30pm
Fee: \$56.00

Quilting/Sewing

FK2501 KNITTING – SWEATER/PROJECT HELP

This course is designed for the knitter who knows how to knit and purl. You will learn the important steps required to knit a well-fitting sweater and then knit a sweater pattern you have been wanting to knit, or bring a sweater you have started to knit but find you need some help. Additional techniques included in this course are increasing/decreasing stitches, picking up stitches, and proper seaming techniques. If you are uncertain about the yarn or other supplies for your chosen pattern, please email the instructor prior to the first class at kathechristensen@comcast.net.

Dates: Mondays - September 15 through November 10
(8 sessions, no class October 13)
Instructor: Kathe Christensen
Time: 5:00pm - 7:00pm
Fee: \$112.00++

FK2502 KNITTING – FAIR ISLE KNITTING

This course is a continuation of a series of classes on color knitting. Fair Isle Knitting is a well-known example of stranded knitting using two colors in the same row. This allows you to work with many colors per project. It uses traditional patterns in small motifs that are repeated across a row. Fair Isle is always worked in stockinette stitch, so if you know how to knit and purl, you can work a Fair Isle pattern. You will learn how to correctly hold two colors of yarn on each row/round and work with them without twisting the yarn. Choices for class projects include scarves, hats, mittens, cowls, and sweaters. If you have additional questions, please email the instructor prior to the first class at kathechristensen@comcast.net.

Dates: Tuesdays - September 16 through November 11
(8 sessions, no class on September 23)
Instructor: Kathe Christensen
Time: 6:00pm - 8:00pm
Fee: \$112.00++

FK2503 KNITTING – ON THE BIAS

Most knitted fabrics are worked with rows parallel to the top and bottom or sides of the knitted piece. In bias knitting, the rows are worked at an angle. This effect can be worked in a square, a rectangle, or other geometrical shapes. Knitting pieces can also have added interest by incorporating bias knitting with the stitch pattern. Herringbone stitch patterns are examples of that. The increases and decreases in the stitch pattern form a zig-zag design. If you can knit and purl and increase and decrease, you can knit diagonally. Potential projects are scarves, shawls, hats, and cowls. If you have additional questions, please email the instructor prior to the first class at kathechristensen@comcast.net.

Dates: Thursdays - September 18 through November 13
(8 sessions, no class on November 6)
Instructor: Kathe Christensen
Time: 6:00pm - 8:00pm
Fee: \$112.00++

FQ2501 QUILTING BY MACHINE

This course is for the confident beginner to intermediate level machine quilter. This semester, you will learn the Paper Piece Technique: cutting and block placement, borders, binding and assembling of a quilt. The choice of patterns that will be offered for this class are Holiday Design Blocks, such as star, tree, and snowman. You will be able to make a table runner, pillows, a wall hanging, or quilt of your choice. Basic knowledge of sewing and sewing machines are necessary. This course requires the independent purchase of supplies by the student. Upon registration, a supply list will be emailed to the student.

Dates: Mondays - September 15 through November 10
(8 sessions, no classes on October 13)
Instructor: Doreen Dever
Time: 5:30pm - 8:30pm
Fee: \$168.00++

FS2501 SEWING – BEGINNERS

This course is for individuals who wish to learn how to use a sewing machine. Starting from the basics, the instructor will review parts of the machine, functions and how to get started sewing. How to hem clothes by machine with finishing touches by hand will be included along with one or two small sewing projects designed for the novice. Please bring your sewing machine and machine instruction book to each night of class. This course requires the independent purchase of supplies by the student. Upon registration, a supply list will be emailed to the student.

Dates: Tuesdays - September 16 through November 11
(8 sessions, no class on September 23)
Instructor: Karen Bohme
Time: 5:30pm - 8:30pm
Fee: \$168.00++

FS2502 SEWING – ADVANCED BEGINNERS

This course is for individuals who have basic knowledge of how to use a sewing machine. The course will go over the basic and decorative stitches on your machine, how to alter garments, as well as learning how to read and sew with a pattern. Participants need to bring their own sewing machines and supplies to class. Upon registration, a supply list will be emailed to the student.

Dates: Wednesdays - September 17 through November 12
(8 sessions, no class on October 15)
Instructor: Karen Bohme
Time: 5:30pm - 8:30pm
Fee: \$168.00++

**Interested in an Electrical, HVAC
or Plumbing Apprenticeship?**
Learn more on page 20

Culinary Arts

FF2501 CULINARY SKILLS - BEGINNERS

Adult students will be introduced to the essential techniques of cooking during this eight-week course. Tailored for beginners, this class will focus on foundational culinary skills, from knife handling to sauce making, while highlighting the seasonal and regional ingredients of the shore. Students will leave empowered to create original dishes using local ingredients.

Dates: Mondays - September 15 through November 10
(8 sessions, no class on October 13)
Instructor: Jeff Miner
Time: 5:30pm - 8:30pm
Fee: \$200.00 + \$60.00 (supply fee)



FF2505 PUMPKIN PECAN PIE AND CRANBERRY WALNUT TORTE

Learn how to make two seasonal delights that will be sure to impress your guests during the holiday season. Pumpkin pecan pie and cranberry walnut torte both take time to prepare but are well worth the effort. Be sure to bring an apron and containers to bring home these treats.

Date: Tuesday, October 7
Instructor: Gwen Raring
Time: 4:00pm - 7:00pm
Fee: \$30.00 + \$45.00 (supply fee)

FF2502 PEACH PIE SCONES WITH STRAWBERRY ICE CREAM

Learn to make two different desserts to help summer last a little bit longer. This class will start with making fresh peach pie scones, and finish the night with homemade easy strawberry ice cream. Make sure you bring an apron and containers to bring home your tasty treats.

Date: Tuesday, September 16
Instructor: Gwen Raring
Time: 4:00pm - 6:00pm
Fee: \$30.00 + \$45.00 (supply fee)

FF2506 PETITE FLAVORED CHEESECAKES WITH HOMEMADE CRUST

Learn how to make various flavors of homemade petite cheesecakes using the same base recipe including caramel, Oreo, or raspberry with a white chocolate glaze, complete with a homemade crust. Gluten-free options will also be available. Be sure to bring an apron and containers to bring home these treats.

Date: Tuesday, November 4
Instructor: Gwen Raring
Time: 4:00pm - 7:00pm
Fee: \$30.00 + \$45.00 (supply fee)

FF2504 STRAWBERRY CREAM CAKE

In this class you'll learn how to make strawberry cream cake, a traditional hot milk cake filled with macerated strawberries and freshly whipped sweetened cream. Please bring an apron and a container large enough to bring your strawberry cream cake home.

Date: Tuesday, September 30
Instructor: Gwen Raring
Time: 4:00pm - 7:00pm
Fee: \$30.00 + \$45.00 (supply fee)





Health/Mindfulness

FH2501 FIT FUSION

Fit Fusion is a 50- to 60-minute fitness program that combines a variety of modalities, such as drumming, light weightlifting, Pilates, barre, yoga, and more. It is set to upbeat music that will make you forget you're exercising. The class is designed to increase flexibility, balance, coordination, muscular strength, and cardiovascular endurance, and can be done in a chair or standing. Everyone is welcome, no matter your fitness level or age.

Supplies needed: Wear sneakers and clothing that allows for ample movement and comfortability. Bring light hand weights, 2 to 3 pounds, no more than 5 pounds, and water.

Dates: Tuesdays - September 16 through November 4
(6 sessions, no class on September 23 and October 28)
Instructor: Lynne Catarro
Time: 4:00pm - 5:00pm
Fee: \$42.00

FH2502 FUNCTIONAL FITNESS OF ADULTS

Functional Fitness training is a type of exercise that prepares your body for the demands of everyday life by mimicking functional movement patterns. It focuses on strength, flexibility and coordination to improve your ability to perform daily tasks efficiently and safely. Key principles of functional fitness are to replicate daily activities like bending, twisting, squatting, lifting and reaching, improving core stability, dynamic balance, functional strength, and the body's ability to absorb impact and maintain balance during everyday activities. Functional fitness is beneficial for people of all ages and fitness levels. Please bring a blanket and yoga mat.

Dates: Wednesdays - September 17 through November 12
(8 sessions, no class on October 15)
Instructor: John Teofilak
Time: 6:00pm - 7:00pm
Fee: \$56.00

FH2503 GENTLE CHAIR YOGA

Gentle chair yoga is practiced in a chair and/or with the aid of the chair for support during balance postures. It is a safe, accessible, sustainable, adaptable yoga practice that is ideal for individuals of all ages, abilities and fitness levels. Provided in a supportive and interactive environment, this class incorporates breathing exercises, gentle stretches, yoga postures, mild yoga flows, standing balance and a final relaxation. This practice may help increase one's flexibility, lung capacity, strength, endurance and improve balance while maintaining a mental well-being, self-confidence and overall healthy lifestyle. For greater comfort and ease of movement, avoid tight, restrictive clothing. Highly recommended: slip proof socks, a long scarf or yoga strap, and tennis ball.

Dates: Tuesdays - September 16 through November 4
(6 sessions, no class on September 23 and October 28)
Instructor: Lynne Catarro
Time: 5:15pm - 6:15pm
Fee: \$42.00

FH2504 HOLISTIC WELLNESS - INTRODUCTION

Explore the foundations of holistic wellness in this course. Each week a topic related to holistic wellness for the mind, body, and spirit will be presented with a brief meditation practice to assist you with living a balanced and fulfilling life. Various topics include: Breathing techniques, types of meditation, *essential oils and natural home remedies, shadow work and journaling, and more. Please bring a yoga mat and a blanket unless you would like to remain seated in a chair. *Prior to using essential oils, check with a healthcare professional if you have a serious medical condition or if you are pregnant, nursing or planning to become pregnant.

Dates: Thursdays - September 25 through October 30
(6 sessions)
Instructor: Debbie Valletto
Time: 4:00pm - 5:00pm
Fee: \$42.00

FH2505 MEDITATION AND COMPLEMENTARY PRACTICES

Meditation is an ancient tradition that is practiced in cultures all over the world to create a sense of calm and inner harmony. By practicing breathing techniques, body scans, guided meditations, and using a Tibetan healing bowl, the goal of the weekly class is to gain a sense of peace and balance that can benefit your emotional well-being and overall health. The class will conclude with reflection and journal time. Please bring a blanket and yoga mat unless you plan to remain seated in a chair.

Dates: Thursdays - September 25 through October 30
(6 sessions)
Instructor: Debbie Valletto
Time: 5:30pm - 6:45pm
Fee: \$52.50

FH2506 SLOW FLOW YOGA WITH MEDITATION

This beginner Hatha yoga class is a gentle and mindful practice designed for those completely new to yoga. The class will focus on learning and holding poses for longer periods and moving through a series of poses at a slower pace. Prior to class ending and attendees rushing back to their routine, a brief journal practice will offer the opportunity to track participants goals. Please bring a blanket and yoga mat unless you plan to remain seated in a chair.

Dates: Mondays - September 15 through October 27
(6 sessions, no class on October 13)
Instructor: Debbie Valletto
Time: 4:00pm - 5:15pm
Fee: \$52.50

FH2507 SOOTHING EFFECTS OF A SOUND PRACTICE FOR RELAXATION

Embark on a relaxing guided meditative experience to nurture your mind and body through the power of soothing sounds resulting in you feeling refreshed, recharged, and deeply connected. Various instruments including crystal singing bowls, ocean drum, tingsha cymbals, and koshi chimes will be used to create unique, soothing sound vibrations to aid you in reducing stress, improving sleep, and enhancing your overall wellbeing. The class will conclude with reflection and journal time. Please bring a blanket and yoga mat unless you plan to remain seated in a chair.

Dates: Mondays - September 15 through October 27
(6 sessions, no class on October 13)
Instructor: Debbie Valletto
Time: 5:30pm - 6:45pm
Fee: \$52.50

FH2508 WEIGHT TRAINING - OPEN FORMAT

This course is conducted in an open-style format just like going to a gym or fitness center. Whether you are familiar with exercise equipment or need an introduction to standard weight room machines and accessories, the instructor can assist you with your specific needs. In the first class, a review of the proper use of equipment along with safety and sanitation procedures will be reviewed. Students should be in adequate physical condition to participate.

Dates: Mondays - September 15 through November 10
(8 sessions, no class October 13)
Instructor: Brian Halsey
Time: 5:30pm - 6:30pm
Fee: \$56.00

Special Interest

FAM2501 AMERICAN MAHJONG - BEGINNERS

Discover the fun and challenge of American Mahjong in this beginner friendly course designed for players with little or no experience. Over a series of interactive sessions, you'll learn how to read and use the National Mah Jongg League (NMJL) card; the roles of the suits, jokers, winds, and other tiles; game structure, including how to build hands and call tiles; rules of play, table etiquette, and scoring basics; practice rounds with guidance and support. This is a great game for mental stimulation while meeting new friends and learning to play with confidence.

Dates: Wednesdays - September 17 through November 5
(6 sessions, no class on October 15 and October 29)
Instructor: Lynne Catarro
Time: 4:00pm - 6:00pm
Fee: \$84.00

FP2501 DIGITAL PHOTOGRAPHY - BEGINNERS

Do you have a DSLR (Digital Single Lens Reflex) or mirrorless camera that you want to use? Digital photography is great for family photos, nature, hobbyists, and more! In this hands-on course you will learn to operate your digital camera to include terminology, parts, features, how to take photos and composition techniques to produce professional pictures. Photos will be taken during class, so please bring your DSLR or mirrorless camera, memory card, charged battery and the camera's user manual to each night of class. Later in the course, a possible field trip to a nearby location to take photos may be included, weather permitting.

Dates: Wednesdays - September 17 through October 22
(6 sessions, field trip on October 15)
Instructor: Kathy Libby
Times: 4:00pm - 5:30pm
Fee: \$63.00++

FID2501 INTERIOR DESIGN OF YOUR HOME - INTRODUCTION

Do you want to feel more comfortable in your home and inevitably happier? Then enroll in this introductory and affordable guide to interior design with an interactive and hands on approach, which will enable you to arrange and accessorize your home on your own, spend less and save more by not making costly errors. Teacher, Jane Reynolds, has been practicing interior design for over 35 years.

Dates: Tuesdays - September 16 through November 11
(8 sessions, no class on September 23)
Instructor: Jane Reynolds
Time: 5:30pm - 7:30pm
Fee: \$112.00

FLL2501 LEARNING ABOUT ALL LEARNERS

Do you know someone with a disability? Have you ever wanted to learn more about how to handle your child's behavior? Do you work with someone with autism or other disabilities? Have you ever had questions or needed help understanding someone with a learning disability? This seminar will assist in understanding and working with a multitude of disabilities and behaviors as well as provide clarity on best practices. Open to parents and community members. No question is silly or off limits as we learn and grow together while becoming advocates for others!

Dates: Thursdays - October 9 and October 23
(2 night seminar)
Instructor: Valerie Bowers
Time: 4:30pm - 6:30pm
Fee: \$40.00

FEB2501 SELLING ON EBAY

Whether downsizing, decluttering or selling items you suspect may be valuable, eBay offers a unique opportunity to sell items via an online platform. In this course you will learn the basics of selling on eBay including how to research, list, sell and ship your items, plus a review of eBay's rules, policies, financial transactions and customer service tips. Students should have an email account and basic knowledge of online shopping. Please note: eBay requires users to process transactions through a checking account.

Dates: Wednesdays - September 17 through October 8
(4 sessions)
Instructor: Susan Cline
Time: 6:00pm - 8:00pm
Fee: \$56.00



FL2501 RUSSIAN MADE EASY

In this course, the Russian language will be presented in a style to explain grammar and vocabulary clearly. Grammar will be dissected to include verb conjugation, adjectives, cases and dialogue. A conversational approach will be included to learn everyday vocabulary and expressions that you can use. Cultural information will be incorporated as necessary to assist the student with learning and understanding the language.

Dates: Tuesdays - September 16 through November 11
(8 sessions, no class September 23)
Instructor: Ekaterina Hamann
Time: 6:00pm - 7:30pm
Fee: \$84.00

FL2502 SPANISH - INTRODUCTION TO CONVERSATIONAL

This introductory course teaches listening and speaking skills in Spanish through active participation. Students will be learning to comprehend and communicate orally in a culturally acceptable manner, using basic language structures and common vocabulary related to traveling and jobs.

Dates: Mondays - September 15 through November 10
(8 sessions, no class October 13)
Instructor: Jennifer Bolling
Time: 5:30pm - 7:00pm
Fee: \$84.00

FR2501 TRAVELING IN RETIREMENT

Discover how to make your retirement dreams a reality! This class will guide you through exploring ways to travel affordably and comfortably in retirement. Whether you're planning once-in-a-lifetime adventures or relaxing getaways, you'll gain tips on budgeting, maximizing benefits, and finding travel experiences that fit your lifestyle. We will explore destinations that you may not have even considered! Perfect for those nearing retirement or already enjoying it-let's make your next chapter the most exciting one yet!

Dates: Wednesdays - September 24 through November 12
(7 sessions, no class on October 15)
Instructor: Terri O'Connell
Time: 4:30pm - 6:30pm
Fee: \$98.00

Dog Obedience

FD2501 DOG OBEDIENCE (Session 1)

This course presents a gentle, traditional method with positive reinforcement for solving undesirable canine obedience problems for dogs at least 6 months of age. The same human trainer must accompany the same dog on each night of class, no exceptions. Exercises include heeling, sit/stay, down/stay, come when called, etc. Problems such as jumping and barking will be addressed. A suitable leash and collar are required. Please, no flex lead or harness; use a flat or martingale collar. Leashes, collars, and training supplies will be available for purchase.

NOTE: NO DOGS ON THE FIRST NIGHT, HOWEVER, PLEASE BRING YOUR DOG'S IMMUNIZATION RECORD (BORDETELLA VACCINE REQUIRED). ON THE FIRST NIGHT, AN ORIENTATION AND RECORD REVIEW WILL OCCUR.

Dates: Thursdays - September 18 through November 13
(8 sessions, no class on November 6)
Instructor: Sandy Fedoroff
Time: 6:00pm - 6:45pm
Fee: \$65.00

FD2502 DOG OBEDIENCE (Session 2)

Course description is the same as Session 1, only the time & instructor are different.

Dates: Thursdays - September 18 through November 13
(8 sessions, no class on November 6)
Instructor: Gail Fumo
Time: 7:00pm - 7:45pm
Fee: \$65.00



FD2503 DOG RALLY - BEGINNERS (Session 1)

Rally obedience is a dog sport based on obedience. It is a team sport for you and your canine companion. You and your dog navigate through a course of 10 to 20 different signs, which display instructions for the skill to be performed at a station. Your dog will need to respond to basic commands such as sit, down, stay, heel, etc. Rally is a great way for you and your dog to bond while working as a team and having fun! Your dog must be at least six months of age to participate. Pre-requisite: Previous basic dog obedience class at Cape May Tech or elsewhere. Class size is limited so each team will have adequate time on the course each week.

NOTE: DOGS WILL COME ON THE FIRST NIGHT. HOWEVER, YOU WILL NEED TO SEND A PICTURE OF YOUR DOG'S IMMUNIZATION RECORD (BORDETELLA VACCINE REQUIRED) TO THE INSTRUCTOR (EMAIL ADDRESS PROVIDED AFTER REGISTRATION).

Dates: Tuesdays - September 16 through November 11
(8 sessions, no class on September 23)
Instructor: Sandy Fedoroff
Time: 6:00pm - 7:00pm
Fee: \$70.00

FD2504 DOG RALLY - BEGINNERS (Session 2)

Course description is the same as Session 1, only the time is different.

Dates: Tuesdays - September 16 through November 11
(8 sessions, no class on September 23)
Instructor: Sandy Fedoroff
Time: 7:00pm - 8:00pm
Fee: \$70.00

FD2505 AMERICAN KENNEL CLUB CANINE GOOD CITIZEN PROGRAM

This program is designed to recognize dogs that have good manners at home and in the community. It stresses responsible dog ownership for owners and basic training and good manners for dogs. Dogs must pass the 10-step Canine Good Citizen test to receive a certificate from the American Kennel Club. Owners and dogs must attend all classes. The first two nights of the program will prepare dogs for the test. The test will then take place over the next two nights of the program. The last night may be used for those who may need a do-over with certain test skills. Please note the test must be done with a flat collar.

Dates: Tuesday & Thursday - November 18, 20, 25;
December 2 & 4
(All sessions must be attended by students for certification)
Instructor: Sandy Fedoroff
Time: 6:00pm - 7:30pm
Fee: \$55.00

TESTING CENTER

Cape May County Technical School serves as a testing center for the following tests:

GED

The GED exam is taken on a computer and covers four subjects: mathematical reasoning, reasoning through language arts, social studies, and science. Each subject requires a separate test. You do not have to take them all at once.

Testing Dates

8/7/25	10/23/25
8/21/25	11/13/25
9/11/25	11/20/25
9/25/25	12/4/25
10/9/25	12/18/25

See testing times and register at **GED.com**

CASAS

The CASAS test is a free reading and math test, which can be used for a One Stop Training grant, entrance to Cape May County Technical School's Post Secondary Programs, or as a free practice test for your High School Equivalency (HSE) (GED).

Testing Dates & Times

9/22/25: 5:00 PM	11/11/25: 12:30 PM
10/6/25: 5:00 PM	12/16/25: 12:30 PM

Register at
capemaytech.com

Check website for additional testing times

TEAS

The ATI TEAS, or Test of Essential Academic Skills, is a standardized exam that nursing programs use to assess applicants. The idea behind the exam is to test an applicant's readiness for nursing school. The TEAS exam covers four main content areas: reading, math, science, and English and language usage.

Testing Dates

9/24/25: 4:00 PM	11/19/25: 4:00 PM
10/17/25: 9:00 AM	12/5/25: 9:00 AM

Register at **capemaytech.com**

High School Education **from HVAC & Sustainable Energies,** **Carpentry to Culinary Arts, Environmental** **Science *and so much more!***

Cape May County Technical School is a career focused public school of choice offering college and career readiness in high school.

Why Choose Cape Tech?

Career Technical Training • Industry Credentials • Rigorous Academics and Electives • College Credits in High School • State of the Art Technical and Science Facilities • Student Life with Sports, Clubs, Activities, and More!

Want to schedule a tour? Want more information?
Call our admissions office at 609-380-0200 ext. 2031
or visit our website: www.capemaytech.com

Need Career Training?

Join one of our Post Secondary Courses!

Application process is open and entrance tests are happening now!
Call (609) 380-0243 for more information.

**Cosmetology • Dental
Assisting • Dental Radiology
Practical Nursing • Welding**

**Electrical, HVAC-R
and Plumbing
Apprenticeships**

All programs lead to industry certification. Post-Secondary applicants are required to take the CASAS pre-entrance exam to earn a seat in any of the programs (except Practical Nursing). Practical Nursing applicants are required to take TEAS test.

Learn more about our Post Secondary Courses on the next 3 pages.



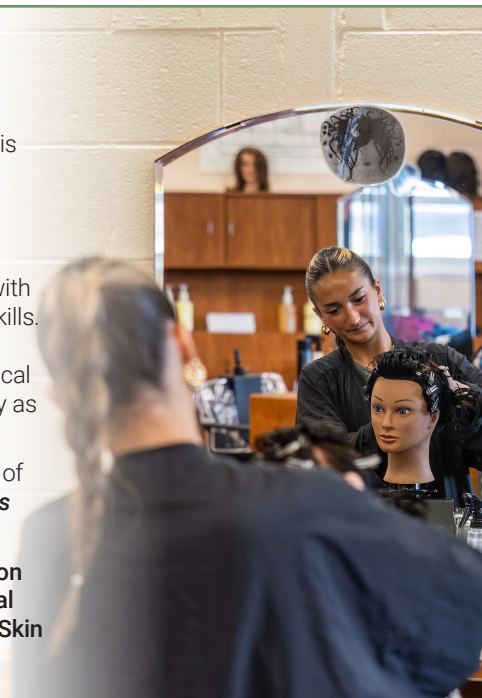
Cosmetology

Post Secondary Program Information

The Cosmetology and Hairstyling program at Cape May County Technical School is specifically designed to prepare graduates for licensing requirements established by the New Jersey State Board of Cosmetology/Hairstyling. Students are required to complete 1000 productive hours of training as part of the course requirements. The district will strictly enforce this requirement. Students of this program will be instructed in all of the state required areas of Cosmetology and Barbering, along with other related areas of study, including workplace readiness and communication skills. Students will practice their skills on mannequins and fellow students. During the second half of the year and upon receipt of their student permit, an "in-house" clinical experience will be added, and students will work with patrons from the community as part of their training.

The Cosmetology program is fully accredited through the New Jersey State Board of Cosmetology. ***The Cosmetology program is a full time 10-month program that runs September through June, Monday through Thursday, 1:00 to 9:00 pm.***

COURSE CONTENT: Safety Issues and Practices • Professional Image • Sanitation • Hair and Scalp Care • Hair Shaping • Barbering Skills • Wet Hairstyling • Thermal Styling • Chemical Applications • Manicuring • Pedicuring • Nail Tech Services • Skin Care • Facials • Make-up Applications • Salon Business • Related Sciences



Dental Assisting

Post Secondary Program Information

The Dental Assisting program at Cape May County Technical School prepares the student to meet requirements to become a Certified Dental Assistant (CDA). Successful graduates also qualify to apply to the State of NJ for the Expanded Function Registered Dental Assistant (RDA) and Limited Radiologic Technologist licensures.

The Dental Assisting program is fully accredited by the American Dental Association Commission on Dental Accreditation (ADA-CODA), approved by the Department of Environmental Protection (DEP) Bureau of X-ray Compliance and approved by the New Jersey State Board of Dentistry.

RDA's upon licensure can enter the workforce starting at \$20-\$33 an hour. ***The Dental Assisting program is a full time 10 month program that runs September through June, Monday through Friday, 8:00 am to 2:30 pm.***

COURSE CONTENT: Chairside Assisting & Expanded Functions • Dental & Medical Emergencies • Dental Health Education • Dental Materials • Dental Patient & Practice Management • Dental Radiology • Dental Science I • Dental Science II • Infection Control & Bio Medical Science • Externship

Dental Radiology

Registration will open December 1, 2025

This course is approved by the New Jersey Radiologic Technology Board of Examiners. Upon conclusion of classroom instruction, students will be eligible to expose radiographs under clinical affiliation policy.

The Dental Radiology course is a 16-week class that runs on Tuesdays, February through May.

Requirements: 18+ years of age • High School Diploma/Equivalent or College Degree (all foreign credentials must have been translated and equivalency prior to the registration and at student's expense • Pass pre-admission testing • Three months current work experience in a dental office • Criminal background clearance

In-Person Registration: Monday through Thursday at Cape May County Technical School, Adult Education Office, Main Entrance, Parking Lot A.

Registration: \$750 registration fee includes course registration, school supply fees. The registration fee is due at the time of registration via check or debit/credit card only - no cash. Mandatory text books, Board Examination, and State License fees are the responsibility of the student.

As per NJDEP guidelines, the following documents are required to be presented at time of registration: Valid Government-issued Photo ID • High School Diploma/Equivalent or College Degree.

Practical Nursing

Post Secondary Program Information

The Practical Nursing program at Cape May County Technical School will provide a curriculum based on the holistic concept of patient care and will provide the students with the necessary knowledge to meet the requirements for licensing in the field of nursing. It will prepare the students to function as members of the health care team and to recognize and meet the needs of people in their care.

This course is approved by the New Jersey Board of Nursing and the New Jersey Department of Education, and consists of both classroom and clinical experiences. **The Practical Nursing program is a full time program that runs September through July, Monday through Friday, 8:00 am to 2:30 pm.** Clinical hours will vary depending on the affiliation site. Additional online instructional time is required.

COURSE CONTENT: Anatomy & Physiology • Chemistry • Community Health • Fundamentals of Nursing • Geriatric Nursing • Growth & Development • Maternity Nursing • Mathematics for Nursing • Medical-Surgical Nursing • Microbiology • Nursing Orientation • Nutrition • Pediatric Nursing • Personal & Professional Relations • Pharmacology • Psychiatric Nursing



Welding

Post Secondary Program Information

The program begins with a comprehensive review of safety protocols and materials commonly used in the welding industry. Classroom instruction is reinforced through hands-on practice and skill development in key welding techniques. Students will gain experience in Oxy-Acetylene cutting, Brazing, and Arc Welding in all positions using 6010 and 7018 electrodes. In addition, the curriculum provides an introductory overview of TIG (Tungsten Inert Gas) welding, allowing students to explore this precision welding process.

Students who successfully meet all program requirements will have the opportunity to take the American Welding Society (AWS) Basic Welder (1-G) certification test, which will be administered on-site. This certification serves as an industry-recognized credential demonstrating foundational welding competency.

The Welding Program is a part-time 28 week program that runs October through April, Monday, Tuesday and Wednesday evenings from 5:00 to 8:00 pm.



Apprenticeship Programs

HOW CAN I QUALIFY?

Candidates are required to have a high school diploma or equivalent. They must also take the CASAS exam and achieve a qualifying score. Prospective students should be employed full-time in the field under the supervision of a licensed professional, with their employer or union agreeing to serve as their sponsor.

**Registration
Now Open**

**All Classes October 2025
through March 2026**

Apprenticeship Tuition: \$3,500 Per Year

Electrical Apprenticeship

Cape May Tech offers related technical classes that can help earn the status of Journeyman Electrician. Students in this program must take a minimum of 144 hours of classroom instruction per year for four years, totaling 576 hours of classroom instruction. In addition, students must complete 8,000 hours of on-the-job training.

Level 1

Hybrid - Tuesday & Thursday
5:00pm - 9:00pm

Campus - Monday & Wednesday
5:00pm - 9:00pm

Level 2

Hybrid Only - Tuesday & Thursday
5:00 pm - 9:00 pm

HVAC-R Apprenticeship

Cape May Tech offers related technical classes that can help earn the status of NJ Master Heating, Ventilating, Air Conditioning and Refrigeration (HVAC-R) Contractor. Students in this program must take a minimum of 144 hours of classroom instruction per year for four years, totaling 576 hours of classroom instruction. In addition, students must complete 8,000 hours of on-the-job training.

Level 1 - Tuesday & Thursday
5:00pm - 9:00pm

Level 2 - Monday & Wednesday
5:00pm - 9:00 pm

Plumbing Apprenticeship

Cape May Tech offers related technical classes that can help earn the status of NJ Journeyman Plumber or Master Plumber. Students in this program must take a minimum of 144 hours of classroom instruction per year for four years, totaling 576 hours of classroom instruction. In addition, students must complete on-the-job training under the supervision of a licensed master plumber.

Level 1: Tuesday & Thursday
5:00 pm - 9:00 pm

Celebrating Over 100 Years of Education that Works!

The Cape May County Technical School was instituted in 1915 by the Cape May County Commissioners and is today situated on an 84-acre campus in the Northern section of the Crest Haven Complex (Middle Township) which is easily accessible from Exit 11 off the Garden State Parkway.

The Cape May County Technical School presently consists of one main building which includes the Tozour (100) Building, the Scrivani (200) Building and the Toft (300) Building, as well as auxiliary buildings that include a greenhouse, the Broadley Administration Building, and waterfront facilities on the sound. Also, baseball, softball and soccer fields have been established on the campus.

The district's educational schools include a full-time career technical high school, shared-time career high school programs, adult post secondary full-time programs, HSE Testing, summer enrichment programs for youth, lab school for preschoolers, and Community Education Classes.

The district is ready to serve the educational technical needs of the community well into the 21st century.

The Cape May County Technical School District shall provide equal and bias-free access for all students to all school facilities, courses, programs, activities and services and give them maximum opportunity to achieve their potential regardless of race, creed, color, national origin, ancestry, age, sex, gender identity or expression, affectional or sexual orientation, marital status, liability for service in the Armed Forces of the United States, nationality, place of residence with the district, socioeconomic status, disability or pregnancy. Enforcement of other district affirmative action/equity policies (1140, 1510, 1523, 1550, 1550P, 2260, 3362, and 5751) contribute to this legally required equality of educational opportunity.

Programs and activities are operated in compliance with Title VI of the Civil Rights Act of 1964 (Title VI, 100.4), Title IX of the Education Amendments of 1972 (Title IX, 106.4), Section 504 of the Rehabilitation Act of 1973 (Section 504, 104.5), Family Educational Rights and Privacy Act (FERPA) for Elementary and Secondary Schools, and Protection of Pupil Rights Amendment (PPRA).

Program Information

- Registration opens to the public beginning on August 13, 2025 for all methods of registration until the first night of class, provided seating is available.
- Registrations will be processed in the order which they are received via on-line, or in-person.
- You may contact the evening school office to see if there is space available in the class you desire. Please call (609) 380-0241 during regular business hours.
- The total course fee must be paid in full at the time of registration.
- The Cape May County Technical School reserves the right to limit registration for courses, to discontinue courses for which there is insufficient registration and to change times, locations and/or instructors.
- Class sizes are determined by the nature of the class and space. If a class is full, it will be closed and a waiting list will be generated for the semester.
- Senior citizens age 60+ receive a discount for all noncertification courses. The discount is 50% off the registration fee. Other supply fees remain full price. ID will be requested.
- Debit or credit cards are required for online registration and are highly recommended for in-person registration. While we can accept exact cash or check payments in person, please note that refunds for these payment methods may take up to 8 weeks to process, whereas refunds to debit or credit cards are typically processed within a few days. If paying with cash, exact change is required, as we are unable to provide change.

Cape May County Technical School District Board of Education

Board President

Alan I. Gould

Board Vice-President

Christopher Kobik

Board Members

Lauren Reed

Casey Halverson

Kenneth Merson

Nancy Ramundo

Executive County Superintendent

Dr. Judith DeStefano-Anen

Board Secretary/ Business Administrator

Lauren Flynn

Cape May County Technical School District Administration

Superintendent

Jamie P. Moscony

Director of Curriculum & Instruction

Kristen Schaffer

Principal of High School

Steven Vitiello

Supervisor of Adult & Community Education

Susan Jurusz

Coordinator of Adult & Community Education

Sally Rutherford

Test Support Specialist

Elizabeth Satterfield

Administrative Secretary for Post Secondary

Kathy Rickards

Cape May County Commissioners

Director

Leonard C. Desiderio

Vice Director

Andrew Bulakowski

Commissioner

Bobby Barr

Commissioner

Melanie Collette

Commissioner

Will Morey

Registration Procedures for Community Education Classes

Ways to Register

Online Registration

- www.CapeMayTech.com
- Online registration opens August 13, 2025
- Each course is registered for separately
- Payment is due online by credit/debit at time of registration (VISA, Mastercard or Discover)
- Senior Citizens age 60+ receive a discount for all noncertification courses
- Registration confirmation is sent via e-mail

In-Person Registration

- Registrations will be accepted Monday through Thursday, excluding holidays, in the Adult Education Office according to the following schedule:

August 13 to September 4, 2025

9:00 a.m. to 3:00 p.m.

September 8, 2025 to first night of class

11:30 a.m. to 7:00 p.m.

Semester begins Monday, September 15, 2025. Registration accepted if seating is available.

- Address for entrance is 188 Crest Haven Road, Cape May Court House, NJ 08210
- Park in Lot A
- Picture ID is required to enter the building via the security screening process.
- Debit or credit cards are highly recommended for in-person registration. While we can accept exact cash or check payments in person, please note that refunds for these payment methods may take up to 8 weeks to process, whereas refunds to debit or credit cards are typically processed within a few days. If paying with cash, exact change is required, as we are unable to provide change.

Symbol Key

(+) Course Supply Fee

A general course supply fee may be charged in courses in which consumable school supplies are used in the instructional/learning process. All listed general course supply fees must be paid along with the course fee at the time of registration. These courses will be identified in the brochure with a plus sign (+) next to the course fee and the identified supply fee listed.

(++) Course Supplies need to be purchased

Some courses require supplies to be used in class which cannot be effectively included in a general supply fee due to the nature of individual appeal for projects. These courses will be identified in the brochure with a double plus sign (++) next to the course fee. Instructors will provide students with the names of suggested vendors who may stock the necessary supplies.

(S) Safety

Persons taking a class where tools, power machines, toxic fumes or flammable liquids are being used must wear proper safety clothing, breathing devices and approved eye protection as directed by the instructor, at all times in the shop area. Classes that require safety agreements will be identified in the brochure with an (S) and students are required to sign a safety agreement prior to participation.





188 Crest Haven Rd. Cape May Court House, NJ 08210 • 609.380.0241
www.capemaytech.com